

presenting

Adhesive Dentistry 2K11

Oakville Ontario Friday Oct 14th, Ottawa Ontario Friday Oct 28th

This course is a must for those seeking to place the finest restorations possible with the fewest difficulties. Among the topics covered are the principles of adhesion, including an overview of all available resin bonding systems, specific recommendations, the best and easiest method for creating a properly wet etched dentin surface and precise instructions. Other topics include the sealing of crown preparations, evaluation and treatment of tooth pain and post-operative sensitivity, placement techniques for all classes of restorations, the best use of flowable resin composites and the truth about deep posterior restorations.

Attendees will learn about current ceramics and how best to bond to ceramic and to tooth structure. Attendees will also receive recommendations about where to use which kinds of materials. There will be discussion of the best activation lights, whitening, and things one might want to have in one's dental armamentarium.

Goals:

- Maximize the performance of resin bonding agents
- Place large durable resin composite restorations
- Evaluate and treat different types of tooth pain
- Generate outstanding posterior contacts in resin composites

- Place sensitivity free restorations
- Know why and how to seal crown preps
- Eliminate sensitivity in crown preps

Where:

Friday October 14th, 2011 9:00 AM - 4:00 PM
 Oakville Banquet & Conference Centre
 Oakville Conference & Banquet Centre
 2515 Wyecroft Rd.
 Oakville, Ontario (Bronte Road & QEW)

Friday October 28th, 2011 9:00 AM - 4:00 PM
 Travelodge Ottawa Hotel & Conference Centre
 1376 Carling Avenue Ottawa, ON

Registration 8:00 AM - 9:00 AM
 Seminar 9:00 AM - 4:00 PM



Registration:

After Oct. 1st, 2011 Dr's \$349.95 Aux. \$189.95

Dr's are eligible for 6 CE credits upon completion of this course

Space is Limited so please register early

Call to Register: 1.888.277.2335

Registration On or Before Oct. 1st 2011

\$329.95

Aux \$179.95

Cancellations received on or before Sept 15th, 2011 will be fully reimbursed without penalty. Cancellations received after this date will be reimbursed half the tuition fee or fully credited to your Sure Dental account.

Featuring:

Dr. John Kanca III

Dr. John Kanca III is a graduate of the University of Connecticut School of Dental Medicine. He maintains a private practice in Middlebury, Connecticut with an emphasis on cosmetic dentistry. Dr. Kanca has published over 50 original articles and abstracts in peer-reviewed journals, such as the Journal of the American Dental Association, Journal of Esthetic Dentistry. His work has revolutionized the field of adhesive dentistry. He gave validation to the etching of dentin with phosphoric acid, proved that resins could be used as pulp capping agents discovered the concept known as wet-bonding, and has contributed to the understanding of how resins attach to dentin.



Dr. John Kanca III

Disclosure: Dr. Kanca has a financial interest in Apex Dental Products



SureDental

To Register Please Call 1.888.277.2335

Injectafil

Dual Cure Injectable Composite

Injectafil™ is a dual cure composite with handling characteristics that make it ideal for Class I, II, III, IV and V restorations. Other uses of this material are as a resin cement for indirect restorations or a core build up material. The dual cure mechanism provides speed in placing restorations while limiting the amount of stress created in the curing process.

Injectafil™ is an injectable composite that can be used to bulk fill restorations. Using the auto mix tips provided, Injectafil™ is easily injected directly into the cavity preparation. The material can be shaped with the provided dispensing tips prior to activation.

\$119.95

10 gm Cartridge



Bib Eze

Paper Bib Holders

Bib-Eze are disposable bib holders that simplify handling, while eliminating any need to sterilize. Made from lightweight, elasticized fiber, Bib-Eze does not feel cold on the patient's neck, has no sharp edges and stretches to comfortably fit. The self-adhesive ends secure Bib-Eze to any bib, and removal is as easy as tearing a piece of paper. Bib-Eze are cost-effective replacements for reusable and other disposable bib holders



\$16.95
250 PK



Simplicity

Self Etch Adhesive

*Superior Bond Strengths
No Post Operative Sensitivity
Simple to Use Truly Universal
Excellent long Term Performance*

\$139.95



5ml Simplicity 1, 5ml Simplicity 2

Simplicity® is a no rinse bonding system that combines the etchant and primer application into one simple step. It allows for more predictable clinical results, it is less technique sensitive, without sacrificing shear bond strength. Because there is no need to rinse the etchant before primer application, Simplicity® also saves time during the procedure. It is intended for use with all categories of resin composite materials. Simplicity® is compatible with all methacrylate-based materials.

2 or More Sets **\$134.95 ea**

3 or More Sets **\$126.95 ea**

Mira Tray

Implant Tray System

No Customized Tray Needed!
Eliminates Additional Patient Visit

\$42.95

Intro Kit
Upper/Lower S,M,L

Refill Trays
6 of 1 Size
\$42.95

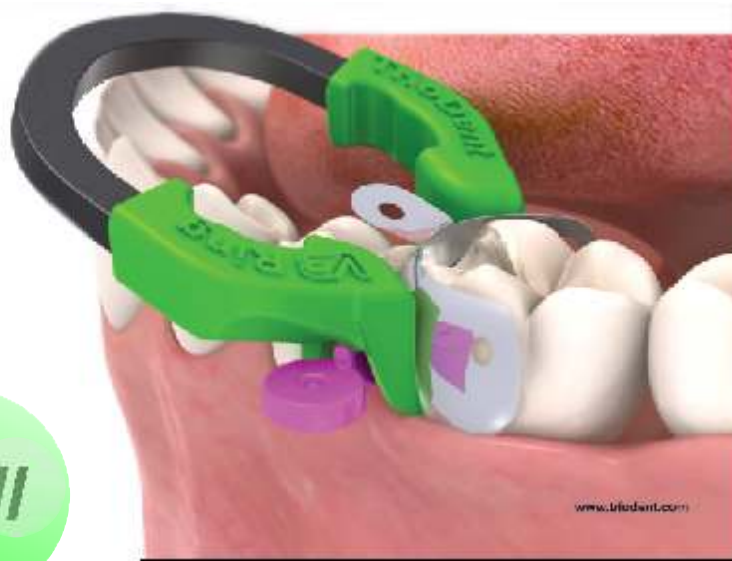
- Ease of use (with patented foil technology)
- Abutments clearly visible through foil
- Superior technique - allows tray repositioning with the precision of the "pick-up" technique
- Saves time – one additional patient appointment only
- Saves money - no customized tray needed
- Clean and precise – no overflow of impression material at the abutments
- Compatible with all impression material and implant systems
- Available in three sizes each for maxilla and mandible, for dentulous and edentulous jaws



V3 SYSTEM



Call



1-888-277-2335